



United We Stand Fukushima

~ Voices from Fukushima ~



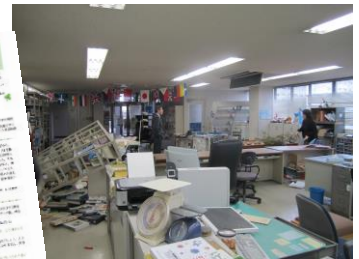
It has been 5 years since the Great East Japan Earthquake and the nuclear accident at Fukushima Daiichi Power Plant. On Friday, March 11th, various places in Fukushima will be holding memorial ceremonies to commemorate Great East Japan Earthquake. These ceremonies will be for mourning the lives lost and praying for a swift recovery.

Immediately following the disaster the Fukushima International Association public relations newspaper "GYRO" began publishing a disaster recovery edition called "United we stand Fukushima". The new publication introduced subjects such as the present condition of Fukushima Prefecture, the activities of International Exchange and Association organizations throughout the prefecture, and the voices of foreign residents. This time we'd like to look at a summary the past 5 years.



5 Years since the Great East Japan Earthquake, Fukushima in the Now

A month and a half after the Great East Japan Earthquake, "United we stand Fukushima" was launched with the idea of a Fukushima that will not lose in the face of adversity. 3 years after its publication, CLAIR's Paris and Seoul branches helped translate the articles, thus making restoration and rehabilitation efforts of Fukushima available in Japanese and 6 other languages (English, Chinese, Tagalog, Portuguese, Korean, and French). In April of 2012, it was also published as a blog.



(Right) The state of the FIA office directly after the disaster
(Left) The First Issue of "United we stand Fukushima"



June 2013, Tohoku Rikkonsai in Fukushima city, bustling with tourists from all over the country.

Due to the damage done by the earthquake and nuclear accident, restoration of livelihoods and environments in affected areas has taken a long time. However, positive reports are steadily increasing, from the progress in restoration and maintenance of public infrastructures, to the reopening of medical and social welfare institutions. Through this newspaper, we have been able to spread inspection results on all bags of rice, radiation levels of agricultural produce, the situation of the fishing industry, etc., along with information pertaining to agricultural and marine products originating from Fukushima prefecture. We have also highlighted the efforts being made by the tourism industry. Last year from April to June, a nationwide project called the "Fukushima Destination Campaign" showcased festivals and events symbolizing the citizen's hopes for restoration. As a result, the number of tourists jumped to 90% what it was before the disaster. This year the "Fukushima After Destination Campaign" will take place from April to June, with the expectation that tourist numbers will rise once more.

Of the foreigners residing in Fukushima Prefecture, June 2012, saw a fall in numbers to 15% what they were before the disaster, approximately 9,259. These numbers began a gradual climb, and by the end of June 2015, they had returned to approximately 10,668 foreigners in the prefecture (Ministry of Justice "Statistics on Foreign Residents"). After experiencing the earthquake many foreigners realized the necessity of being able to communicate with their communities, and began proactively developing their foreign communities and networks in case of another disaster situation. Currently, many organizations gather in places like public halls and community centres to present on the traditional customs of their countries, and give lectures on their spoken languages.



The "Disaster Prevention Lecture for Foreign Residents" that took place in January 2015. They learned about how to prepare for an earthquake, and how to cope with natural disasters.

Measurement of radiation levels in Fukushima Prefecture (provisional values)

Source: Fukushima Prefectural Government Home Page <http://www.pref.fukushima.lg.jp/>

The measured levels of environmental radioactivity throughout Fukushima Prefecture (provisional numbers) are published on the Fukushima Prefectural Government's home page. They are then translated into English, Chinese, Tagalog, Portuguese, and Korean, and posted to the Fukushima International Association Home Page. The decontamination of residential buildings is steadily progressing, and compared to results from before the Great East Japan Earthquake, readings have dropped significantly.

Unit : $\mu\text{Gy/h} \rightleftharpoons \mu\text{Sv/h}$ (micro gray/hour \rightleftharpoons micro sievert/hour)

Date, Measuring time	Fukushima City	Koriyama City	Shirakawa City	Aizu Wakamatsu City	Minami Aizu Town	Minami Soma City	Iwaki City
(Usual values)	0.04	0.04-0.06	0.04-0.05	0.04-0.05	0.02-0.04	0.05	0.05-0.06
2011.4.1 9:00	2.44	2.24	0.73	0.24	0.08	0.92	0.58
2016.3.1 9:00	0.20	0.11	0.09	0.06	0.05	0.09	0.07
Direction and Distance from 1st power plant	Northwest \approx 63km	West \approx 58km	West southwest \approx 81km	West \approx 98km	West southwest \approx 115km	North \approx 24 km	South southwest \approx 43km

※Measurements taken from the Fukushima city Kenpoku Health and Welfare office, others taken from government building parking lots in various cities and towns. The measuring device used was an MMP (Mobile Monitoring Post).

※Radiation Levels measured throughout the prefecture in 2008.

Voices from the citizens in Fukushima

"Voices from the citizens in Fukushima" is an interview corner, featuring foreign residents of Fukushima, talking about their experiences and their current thoughts on living in Fukushima. 82 of these articles are archived on the FIA Home Page.

URL : <http://www.worldvillage.org/english/jishin/fukushima.html>

This time we were able to interview Ms. Reiko Tetsuka and Ms. Kathryn Goto, who appeared in the very first issue of "United We Stand Fukushima" and ask about their thoughts 5 years after the Great East Japan Earthquake.

Reiko Tetsuka (Fukushima Resident. From China)

After experiencing the Great East Japan Earthquake, I strongly considered what I could do for Fukushima, and what I could do to contribute to the situation. About a year later, I started a business. Our main work was in translating and interpreting, but we also supported businesses making advances into China, and helped foreign residents integrate into society. Little by little, our business has expanded. We recently named our venture the "Fukushima Restoration Project" and began taking on tourism jobs from the prefecture. We also promote Fukushima to Chinese tourists. From now on, I would like for us to remember to "always challenging new things" and continue working towards the future.



Kathryn Goto (Osaka Resident, Fukushima Resident at time of Disaster. From the Philippines.)

Right after the earthquake, I began receiving an onslaught of inquiries to my cellphone from Filipino residents all over the prefecture. I relayed information on buses and flights for evacuation. At the time, things were incredibly difficult. After I received a commendation from the Philippine Embassy, I really felt that I had helped, and become a pillar of strength for my people. Due to the circumstances of my job, in the spring 2014 I moved from Fukushima City to Osaka City, and I began working for an accounting office. I also work as an interpreter of Tagalog, and as a life consultant. I still receive lecture requests from schools and local governments. It is exactly because I experienced the Great East Japan Earthquake, that I am able to spread information, and I would like to continue doing so in the future.



FIA Information

●Support Desk for Foreign Residents

Here at the FIA, we provide consultation services for foreigners in English, Chinese, Korean, Tagalog, and Portuguese.

- English, Chinese, Japanese Consultation
Every Tuesday to Saturday from 9:00 to 17:15
- Korean, Tagalog, Portuguese Consultation
Thursday from 10:00 to 14:00
※Appointment necessary for 4th and 5th Thursdays.

TEL : 024-524-1316(direct line) E-mail : ask@worldvillage.org

Publisher

Fukushima International Association

Address : 〒960-8103

Funabacho 2-1, Fukushima City,
Fukushima Prefecture

TEL : 024-524-1315 FAX : 024-521-8308

E-mail : info@worldvillage.org

URL : <http://www.worldvillage.org>